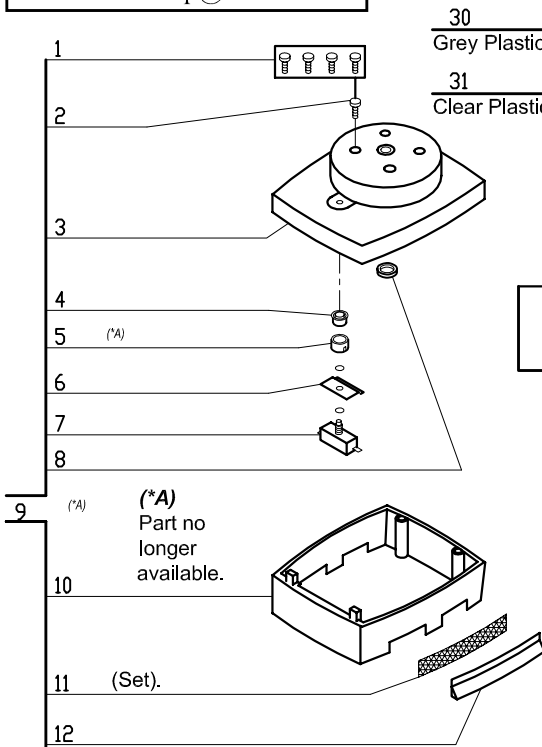
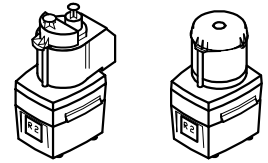


Phone: 1-800-824-1646
 Fax: 601-898-9134
 email: robocoup@misnet.com

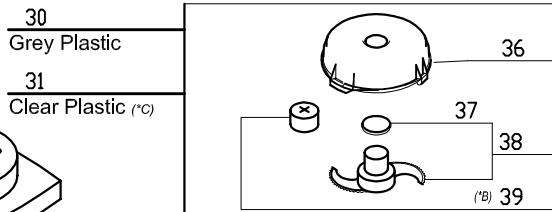
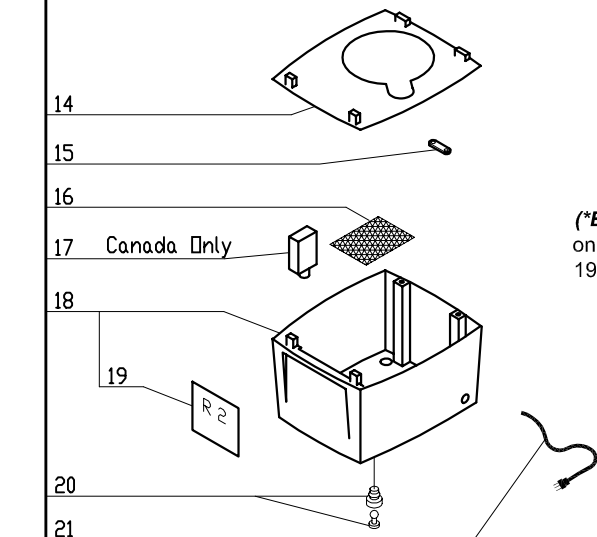
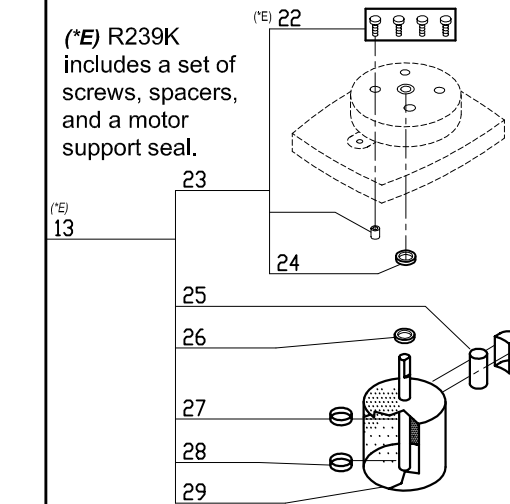
R2 (old style)

Old Style Machines-Machines with no push buttons
 1-Speed, 120 Volt, 1 Phase, 60Hz., 1/2 HP.
 1725 RPM, 7 Amps

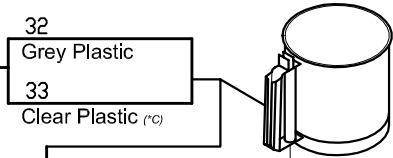


(*A) Part no longer available.

(*E) R239K includes a set of screws, spacers, and a motor support seal.



(*B) Rubber blade seal R287 is only for machines manufactured 1993 and before.



(*D) 3 Quart bowls have a handle and are 6 inches tall.

(*D) The 2 Quart bowls (NLA) do not have a handle and are 5 1/4 inches tall.

(*C) If ordering the R2N with the clear bowl, order model number R2NCLR.

(*C) If ordering the R2B (bowl only) with the clear bowl, order model number R2BCLR

(*G) 27242 USA Serial Numbers Beginning 230xxxxx03 Canada Serial Numbers Beginning R2010500

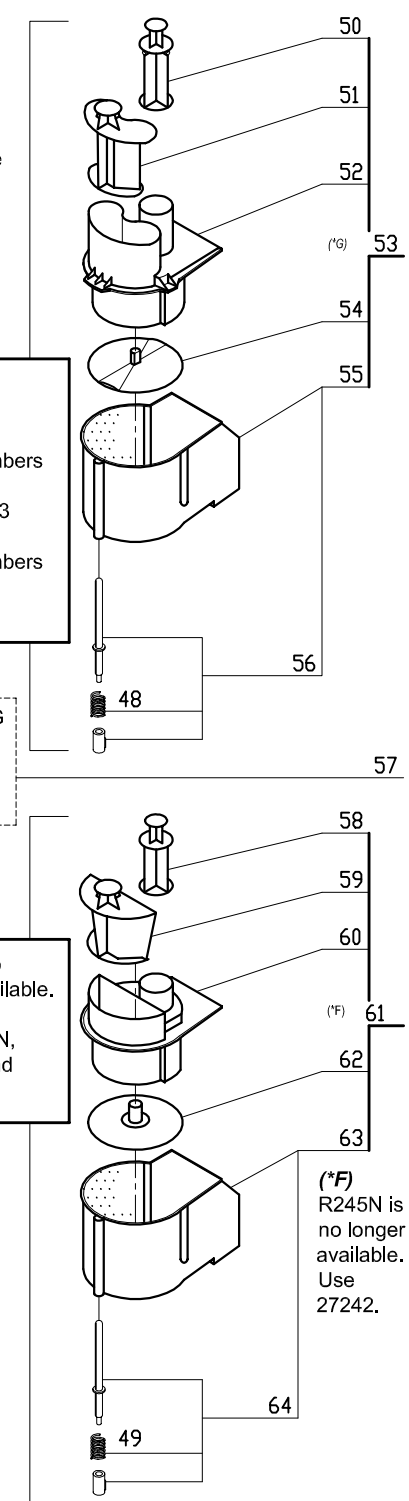
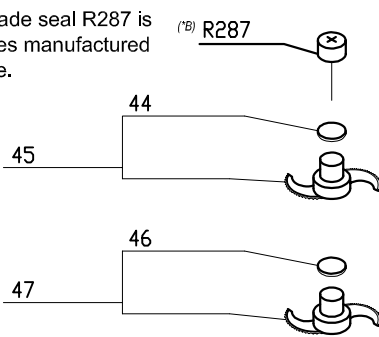
Before (MFG Code F6)

R205 is no longer available. Use R205N, R228N, and R229N.

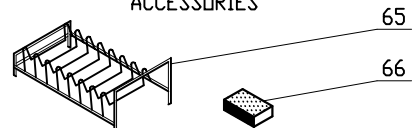
(*F) R245N is no longer available. Use 27242.

ACCESSORIES

(*B) Rubber blade seal R287 is only for machines manufactured 1993 and before.



ACCESSORIES



Index PDF	Référence	Designation commerciale	Tarif
1	R232K	R2 Screw Kit	3.50 USD
2	R232	Motor Support Screw	1.95 USD
3	29062	Motor Support - NO LONGER AVAILABLE	0.00 USD
4	500527 500527S	SEAL RING	2.70 USD
5	R254	***NLA***Plastic Sleeve	2.90 USD
6	R224	Switch Plate	4.35 USD
7	R223	Safety Switch	29.75 USD
8	503470	Motor Support Seal	13.20 USD
9	R246	Asmbld Mtr Base F/C 1/3H	1'245.00 USD
10	R275	Spacer	34.90 USD
11	R277	Screen Kit	8.65 USD
12	R276	Louvre	24.20 USD
13	R239K	Motor Kit w/Seal & Hdwe	583.90 USD
14	R278	Baffle	10.40 USD
15	108515	Strain Relief	3.70 USD
17	R286	CIRCUIT-BREAKER	26.25 USD
18	29095	Base	144.50 USD
19	400237	Front Data Plate	35.50 USD
20	R226A	Foot w/Plug	2.30 USD
21	R240	POWER CORD	31.70 USD
23	R239K.1	Seal & Hdwe Kit	49.60 USD
25	R222	CAPACITOR F/C MOTOR (R2N)	65.60 USD
26	R239S	Motor Seal (Gould,Cntry)	33.95 USD
27	R237	BEARING 6203 AO SMITH MOTOR	55.80 USD
29	R239	MOTOR AO SMITH	587.15 USD

30	27239	GREY CUTTER ASSEMBLY	282.00 USD
31	27240	CLEAR CUTTER ASSEMBLY	282.00 USD
32	412204 112204S	GREY BOWL ASSEMBLY	108.00 USD
33	412203 112203S	CLEAR BOWL ASSEMBLY	108.00 USD
34	100964	SPRING	5.10 USD
35	Number NA	Description NA	Contact us
36	406458 106458S	CUTTER LID	54.80 USD
37	117058	BLADE CAP	2.10 USD
38	27055	STRAIGHT BLADE	95.00 USD
39	R287	S Blade Seal	4.35 USD
40	39103	COMPLETE SAFETY ROD	5.80 USD
41	39077	COMPLETE CLEAR SAFETY ROD	5.80 USD
42	29007	WHITE VEGETABLE SLICER BOWL SAFETY ROD ASSEMBLY	5.60 USD
43	29900	COMPLETE SAFETY ROD	5.00 USD
45	27061	FINE SERRATED BLADE	160.00 USD
47	27138	SERRATED BLADE	180.00 USD
50	103281	ROUND PUSHER	14.40 USD
51	103280S	VEGETABLE PUSHER	38.90 USD
52	418592 118592S	VEGETABLE SLICER LID	95.60 USD
53	27242	VEGETABLE SLICER ASSEMBLY	335.00 USD
54	403288 103288S	SLINGER PLATE	18.00 USD
55	402699 102699S	VEGETABLE SLICER BOWL ASSEMBLY	192.00 USD
57	106656	CARROT PUSHER	10.25 USD

58	400440 119162	Small Vegetable Pusher	19.40 USD
59	106524	Large Vegetable Pusher	34.30 USD
60	100106	Continuous Feed Lead	84.50 USD
61	27269	NLA - New Part Number #27242	264.00 USD
65	R255	PLATE RACK	18.00 USD
66	502579	HONING STONE	49.00 USD